
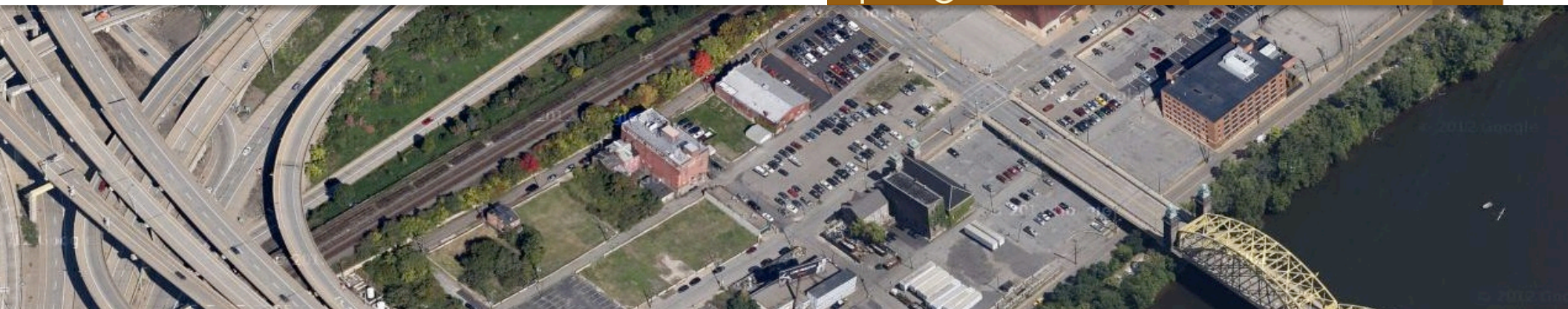


- 
1. Project Objectives
 2. Community Feedback
 3. Master Plan
 4. Master Plan Categories
 5. Master Plan Budgeting

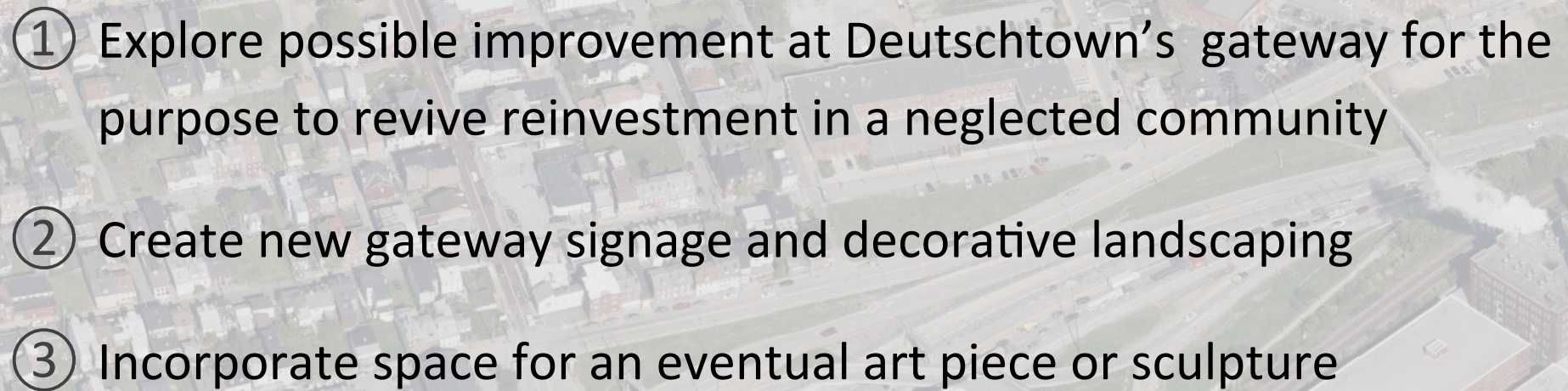


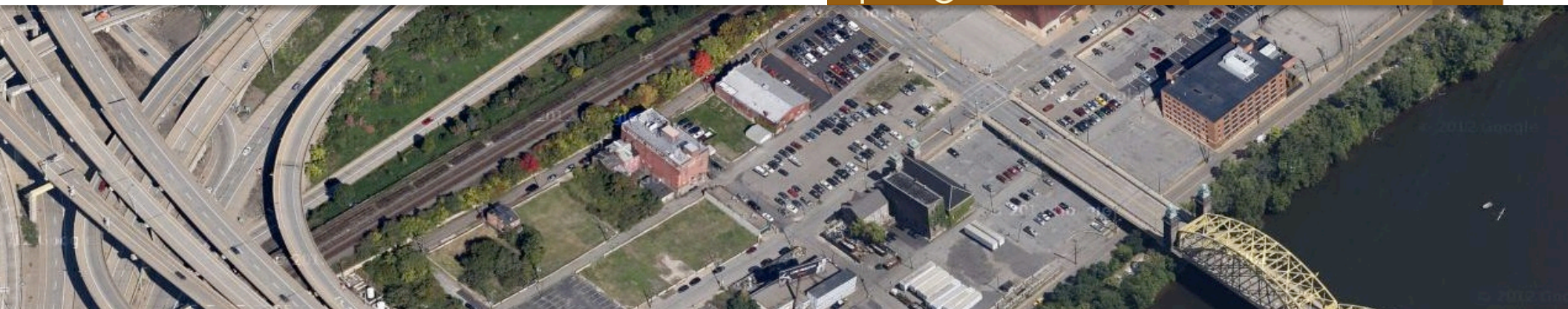
This project was funded by the Pittsburgh Neighborhood Renaissance Fund with support from the Mayor's Office, the Urban Redevelopment Authority, and the Department of City Planning.

It is administered by the Design Center through its Design Fund Program.



Project Recognition

- 
- ① Explore possible improvement at Deutschtown's gateway for the purpose to revive reinvestment in a neglected community
 - ② Create new gateway signage and decorative landscaping
 - ③ Incorporate space for an eventual art piece or sculpture





Gateway Site Areas 
 Neighborhood Visual Edge 

Project Boundaries



Gateway Site Areas 

Project Boundaries



View – West
(From pedestrian bridge)



View – West
(From Troy Hill Rd.)

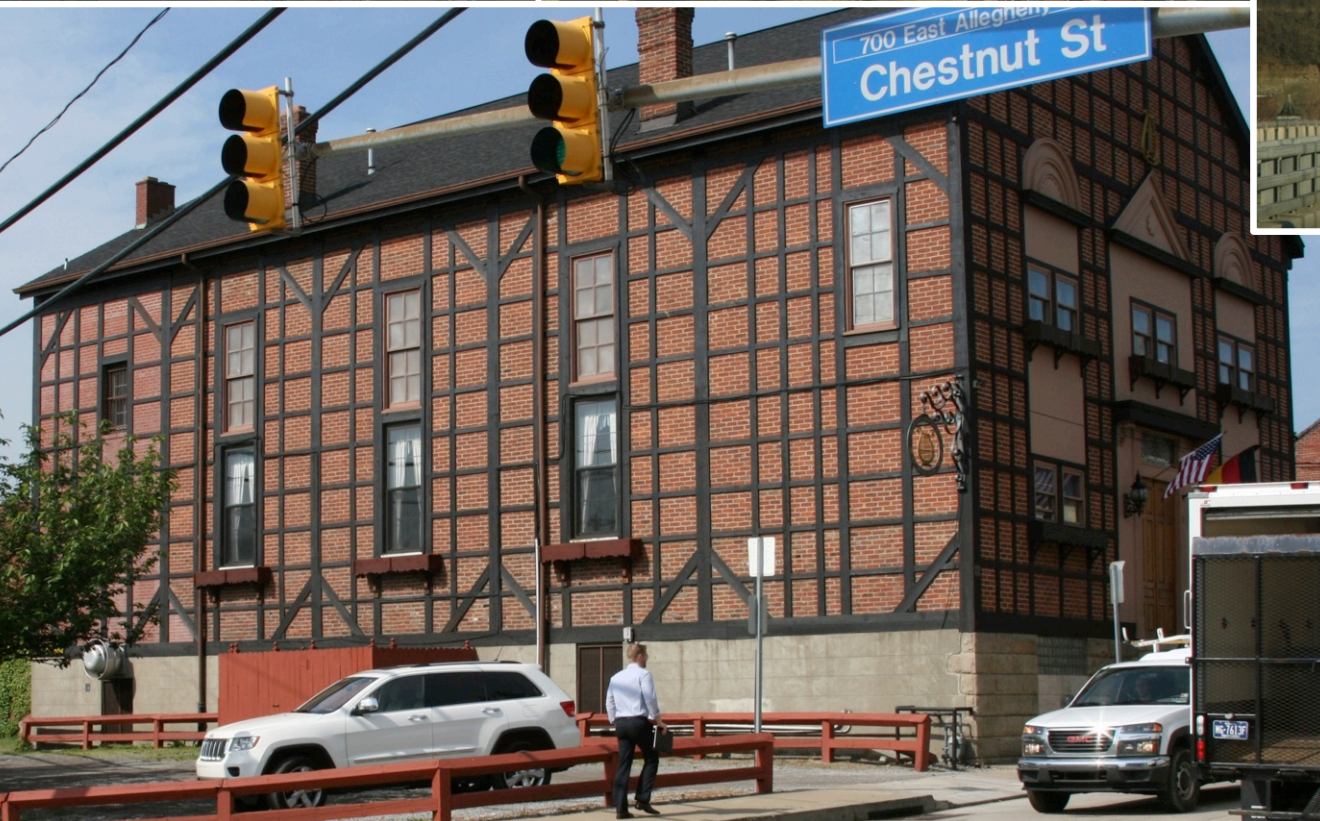


View – West
(From Rt. 28 Exit Ramp)



View – North
(From Chestnut St. Overpass)







Penn DOT – Michael Baker



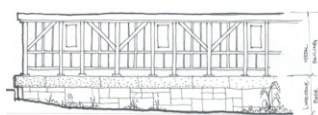
Master Plan – The Monument Helix Landscape



Bike Lane



Helix Landscape



The Monument & Terrace Wall with Railing



The Monument & Terrace Walls



Street Trees



Crosswalk



Façade Updates



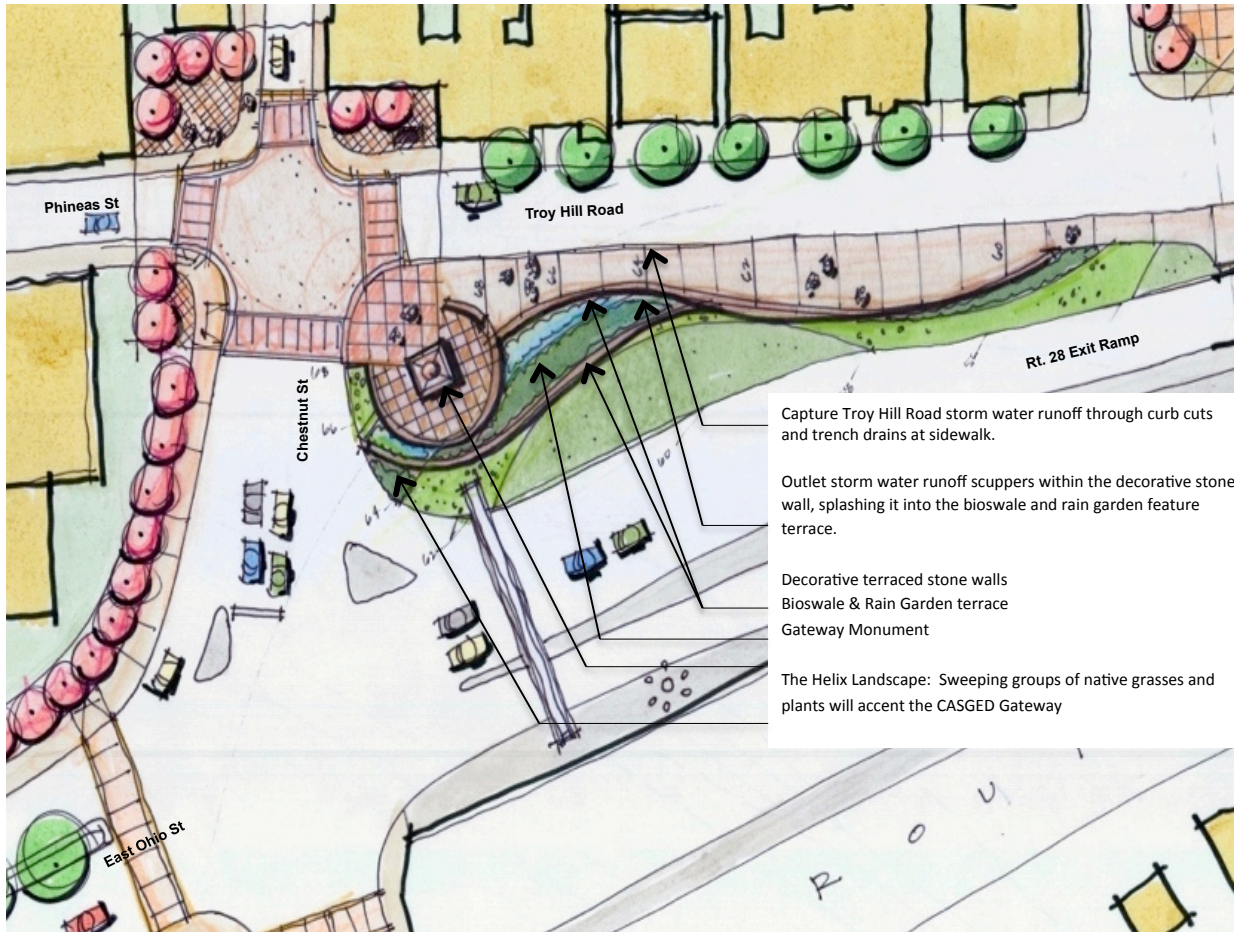
Boulevard, Crosswalk & Street Trees



WHAT ARE YOUR PRIORITIES ?

- ☐ Crosswalks
- ☐ Bus stops
- ☐ Widen walks
- ☐ Bike lane
- ☐ Street trees
- ☐ Monument
- ☐ Terrace walls
- ☐ Façade Updates

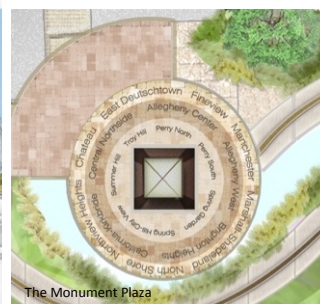
COMMENTS



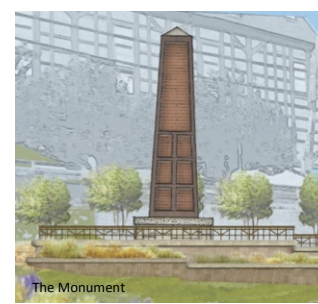
Master Plan – The Monument Helix Landscape



The Monument & Terrace Walls



The Monument Plaza



The Monument

WHAT IS YOUR PREFERENCE?

Streets trees: both sides or only along neighborhood side?



Neighborhood Side



Both Sides

WHAT IS YOUR PREFERENCE?

Color palette: yellow/red/black ?
Color palette suggestion

